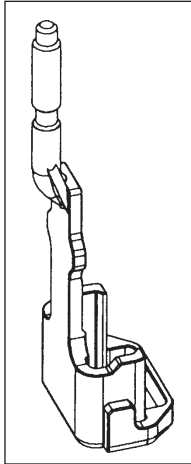


765S5-1E

PNEUMATIC STAPLER

90



OPTIONAL
WRAP AROUND
CONTACT ARM

BOSTITCH®

765S5-1E

PNEUMATIC STAPLER



TOOL PARTS ILLUSTRATION

⚠WARNING:

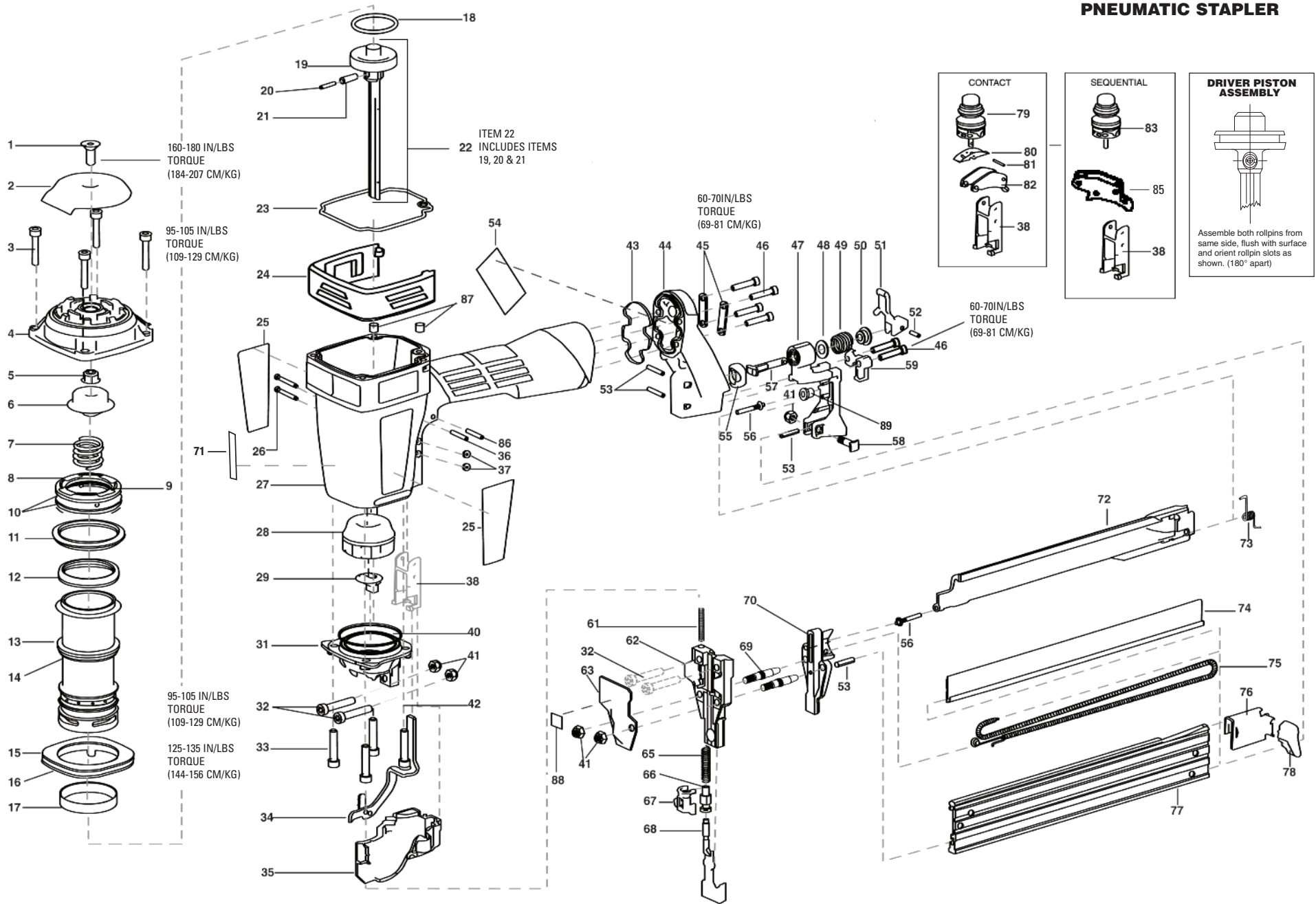
BEFORE PERFORMING REPAIRS ON THIS TOOL, ALL OPERATORS SHOULD STUDY THIS ILLUSTRATION, AS WELL AS THE PARTS LIST AND OPERATION AND MAINTENANCE MANUAL. OPERATORS SHOULD UNDERSTAND AND FOLLOW ALL SAFETY WARNINGS AND INSTRUCTIONS. KEEP THIS ILLUSTRATION WITH THE TOOL FOR FUTURE REFERENCE. IF YOU HAVE ANY QUESTIONS, CONTACT YOUR BOSTITCH REPRESENTATIVE OR DISTRIBUTOR.

BOSTITCH®

Stanley Fastening Systems L.P.

765S5-1E

PNEUMATIC STAPLER



ALSO SEE REVERSE FOR:
1) OPTIONAL WRAP AROUND CONTACT ARM

BOSTITCH

765S5-1E		Parts List:		IP1315-2REVA	
To be Used with tool parts illustration:					
		and operation and maintenance manual:		IP1315-1REVA	
				189893	
Serial Number on the Tool:					
				765S5-1E 10000 000 and Higher	
ITEM	PART #	DESCRIPTION	ITEM	PART #	DESCRIPTION
1	105749	SCREW, SFHCS, M8x1.25x20	56	103768	PIN, MAGAZINE COVER
2	103785	DEFLECTOR	57	105780	PIN, LATCH
3	MSC6100-30	SCREW, SHCS, M6X1.00X30	58	103851	BOLT, SQUARE (SPECIAL)
4	103816	CAP, FRAME	59	103776	MAGAZINE STOP
5	103859	NUT, HFN, M8X1.25	61	107310	SPRING, C.T., INNER
6	103760	BUMPER, TOP	62	107221	NOSE, 750S5
7	103767	SPRING, HEAD VALVE	63	103871	COVER, CONTACT ARM
8	103761	VALVE, HEAD	65	105776	SPRING, C.T., OUTER
9	MRG041630	O-RING, 1.638X.118	66	103865	NUT, ADJUSTING
10	103813	O-RING, 2.217X.103	67	103864	ADAPTER
11	103818	RETAINER, CYL, SLEEVE	68	103792	ARM, LOWER CONTACT
12	103814	SEAL, CYLINDER	69	103838	PIN, NOSE
13	850006	O-RING, 1.987X.103	70	9R189884	CORE TIP, 765S5
14	104597	CYLINDER	71	9R189891	LABEL, CE 765S5-1E
15	851753	O-RING, 2.734X.139	72	104600	COVER, MAGAZINE
16	104605	RING, CYLINDER SLEEVE	73	103839	SPRING, TORSION
17	103862	GARTER BAND	74	103812	COVER, CORE, S5
18	103826	O-RING, PISTON, URETHANE	75	104613	SPRING, PUSHER ASSEMBLY
19	103759	PISTON, T55	76	103846	PUSHER, S5
20	UB2111.2	PIN, SPRING, .125X.69	77	9R189886	ASSEMBLY, CORE, 765S5
21	UB4809.1	PIN, SPRING, .219X.69	78	103791	HANDLE, PUSHER
22	106075	KIT, DRIVER REPLACEMENT-750S5	79	STV2	KIT, TRIGGER VALVE-SPEED
23	103802	SEAL, CAP	80	T55092	ROCKER, TRIGGER
24	107149	PROTECTOR, FRAME	81	MPD016012	PIN, DOWEL, .062X.459
25	105797	LABEL	82	100607	ASSEMBLY, TRIGGER
26	105811	SCREW, TRIGGER PIVOT	83	TVA6	KIT, TRIGGER VALVE
27	107180	FRAME OVERMOLD	85	SEQ6	KIT, SEQUENTIAL
28	103758	BUMPER, BOTTOM	86	MPP030020	PIN, SPIRAL M3X20MM
29	103803	GUIDE, DRIVER, 50S5	87	105821	SLEEVE, FRAME GUARD
31	103782	FRAME, BOTTOM	88	851934	LABEL, TRIP ADJ.
32	MSC6100-35	SCREW, SHCS, M6X1.00X35	89	106961	BEARING, COVER PIN
33	MSC6100-30	SCREW, SHCS, M6X1.00X30	90	107596	ARM, WRAP AROUND CT-750
34	105773	ARM, UPPER CONTACT ASSY			
35	105808	COVER, CONTACT ARM ASSEMBLY			
36	100298	PIN, SPIRAL M3X30			
37	MHE3050-100	NUT, NYLON M3X.50			
38	106953	UPPER TRIP GUIDE ASSY			
40	RG198907-1	O-RING, 1.989X0.070			
41	MHE6100-100	NUT, ESN M6X1			
42	105782	BRACE, LUG			
43	103808	SEAL, END CAP			
44	104602	CAP, FRAME END			
45	103819	RETAINER, END CAP			
46	MSC5080-25	SCREW, SHCS, M5X0.80X25			
47	103786	CAP, MAGAZINE END			
48	104612	WASHER			
49	105786	SPRING, LATCH LEVER			
50	103806	BUSHING, SPRING			
51	103447	TOGGLE, MAGAZINE			
52	MPG030012	PIN, SPRING, M3X12MM			
53	103858	PIN, SPRING, 4X20MM			
54	159918	LABEL, WARNING, 650/750/850			
55	103795	DISC, LATCH STOP			