

SX1838, SX1838-E

OIL-FREE STAPLER
GRAPADORA SIN ACEITE
AGRAFEUSE SANS HUILE

ACCESSORIES AVAILABLE
ACCESORIOS DISPONIBLES
ACCESSOIRES DISPONIBLES

BT55/SX38-RK
BT55/SX38-TIPS

BT1855/SX1838 REBUILD KIT
BT1855/SX1838 NO-MAR TIP PACK

BOSTITCH®

SX1838, SX1838-E

OIL-FREE STAPLER
GRAPADORA SIN ACEITE
AGRAFEUSE SANS HUILE



TOOL PARTS ILLUSTRATION
ILUSTRACIÓN DE LAS PIEZAS DE LA HERRAMIENTA
ILLUSTRATION DES PIÈCES D'OUTILLAGE

⚠ WARNING:

⚠ ADVERTENCIA:

⚠ ATTENTION:

BEFORE PERFORMING REPAIRS ON THIS TOOL, ALL OPERATORS SHOULD STUDY THIS ILLUSTRATION, AS WELL AS THE PARTS LIST AND OPERATION AND MAINTENANCE MANUAL. OPERATORS SHOULD UNDERSTAND AND FOLLOW ALL SAFETY WARNINGS AND INSTRUCTIONS. KEEP THIS ILLUSTRATION WITH THE TOOL FOR FUTURE REFERENCE. IF YOU HAVE ANY QUESTIONS, CONTACT YOUR BOSTITCH REPRESENTATIVE DISTRIBUTOR.

ANTES DE LLEVAR A CABO CUALQUIER REPARACIÓN EN LA HERRAMIENTA, TODOS LOS OPERARIOS DEBERÁN ESTUDIAR ESTA ILUSTRACIÓN, ASÍ COMO LA LISTA DE PIEZAS Y EL MANUAL DE OPERACIÓN Y MANTENIMIENTO. LOS OPERARIOS DEBERÁN ENTENDER Y SEGUIR TODAS LAS ADVERTENCIAS E INSTRUCCIONES DE SEGURIDAD. CONSERVE ESTA ILUSTRACIÓN CON LA HERRAMIENTA PARA PODER CONSULTARLA EN LO FUTURO. SI TUVIERA ALGUNA PREGUNTA, PONGASE EN CONTACTO CON SU REPRESENTANTE O DISTRIBUIDOR DE BOSTITCH.

AVANT DE PROCÉDER À LA RÉPARATION DE CET OUTIL, LES OPÉRATEURS DOIVENT ÉTUDIER LA PRÉSENTE ILLUSTRATION AINSI QUE LA LISTE DE PIÈCES ET LE MANUEL D'INSTRUCTIONS ET D'ENTRETIEN ; ILS DOIVENT ÉGALEMENT COMPRENDRE ET OBSERVER LES CONSIGNES DE SÉCURITÉ ET LES INSTRUCTIONS. CONSERVER CETTE ILLUSTRATION AVEC L'OUTIL POUR RÉFÉRENCE FUTURE. SI VOUS AVEZ DES QUESTIONS, COMMUNIQUEZ AVEC VOTRE REPRÉSENTANT OU VOTRE DISTRIBUTEUR DE BOSTITCH.

BOSTITCH®

Stanley Fastening Systems L.P.

IP1281-1REVD 10/08

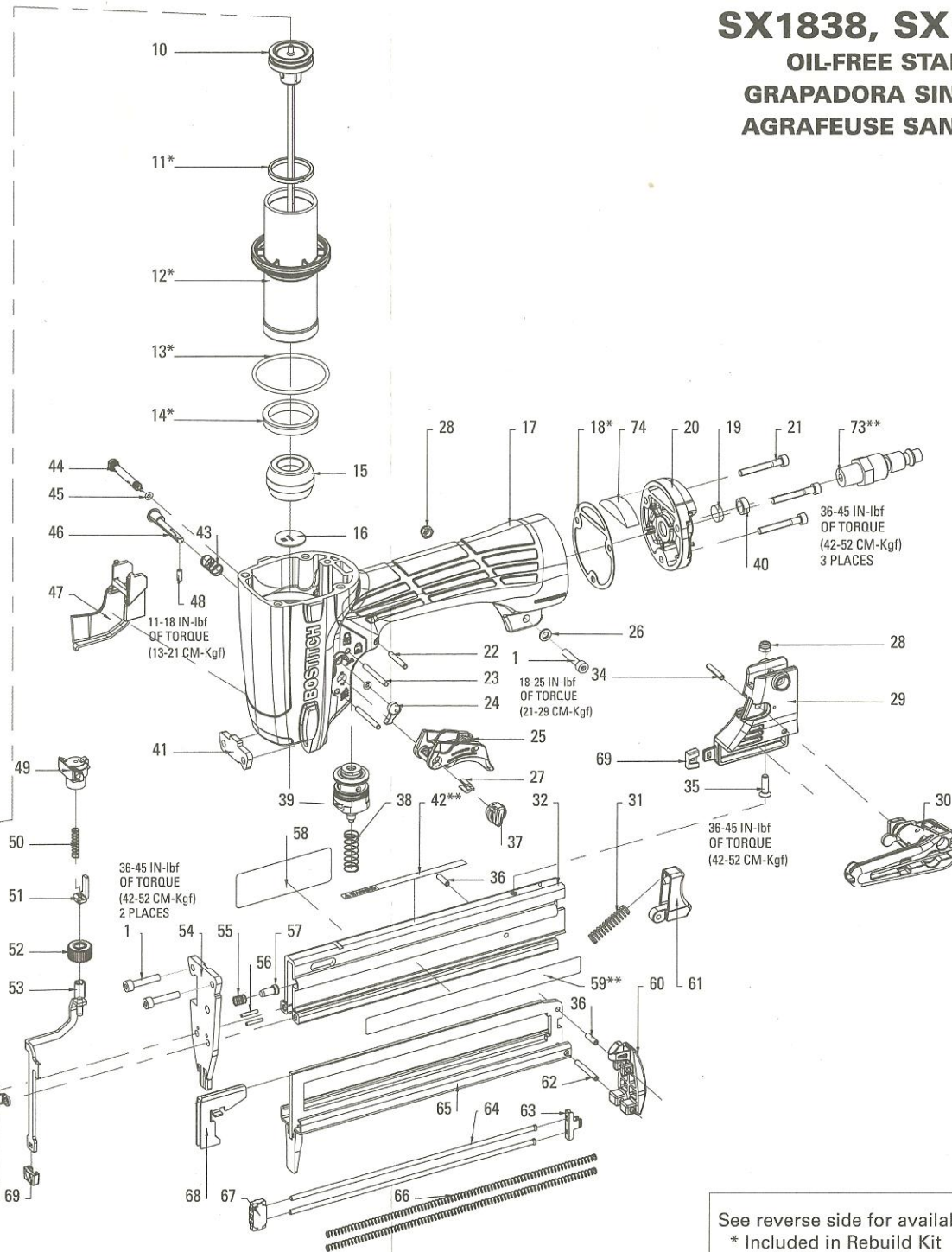
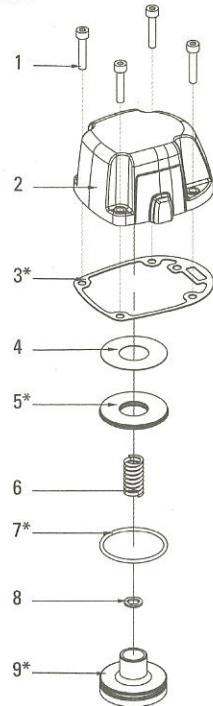
SX1838, SX1838-E

OIL-FREE STAPLER

GRAPADORA SIN ACEITE

AGRAFEUSE SANS HUILE

36-45 IN-lbf
OF TORQUE
(42-52 CM-Kgf)
4 PLACES



36-45 IN-lbf
OF TORQUE
(42-52 CM-Kgf)
3 PLACES

36-45 IN-lbf
OF TORQUE
(42-52 CM-Kgf)
2 PLACES

18-25 IN-lbf
OF TORQUE
(21-39 CM-Kgf)
2 PLACES

See reverse side for available accessories (not included)
* Included in Rebuild Kit
** Not included in SX1838-E

BOSTITCH

SX1838, SX1838-E		Parts List: IP1281-2REVE			
To be Used with tool parts illustration: IP1281-1REVD and operation and maintenance manual: 180585 Serial Number on the Tool: SX1838 09020000 and Higher SX1838-E 09020000 and Higher					
ITEM	PART #	DESCRIPTION	ITEM	PART #	DESCRIPTION
1	100260	SCREW, SOC. HD. CAP M4 X 20	54	180190	NOSE
2	181917	ASSEMBLY, CAP	55	180521	SPRING, LOCK OUT
3	175682	GASKET, FRAME/CAP	56	180490	PIN, SPRING, M2X12MM
4	180445	PLATE, HEAD VALVE	57	180522	PLUNGER, LOCK OUT
5	180446	SEAL, HEAD VALVE	58	180296	LABEL, WARNING (for SX1838)
6	180447	SPRING, HEAD VALVE		182242	LABEL, SX1838-E (for SX1838-E)
7	180448	O-RING, 33.5MMX2.0MM	59**	180302	LABEL, PRODUCT/FASTENER SX1838
8	180449	WASHER, PLAIN, D6X10X1	60	180201	END CAP, MAGAZINE
9	180450	BODY, HEAD VALVE	61	180529	LATCH
10	180205	ASSEMBLY, PISTON/DRIVER	62	180567	PIN, SPRING, M3X25
11	180457	RING, PISTON	63	180200	SUPPORT, SLIDING GUIDE
12	180458	SLEEVE, CYLINDER	64	180526	ROD, SPRING GUIDE
13	180459	O-RING, 44.7MMX2.4MM	65	180206	ASSEMBLY, MAGAZINE CORE
14	180460	CHECK SEAL	66	180527	SPRING, PUSHER
15	180461	BUMPER	67	180199	GUIDE, SLIDING
16	180462	DRIVER GUIDE	68	180198	PUSHER
17	175656	FRAME, OVERMOLD	69	179760	FOOT, CONTACT (NO-MAR)
18	180463	GASKET, END CAP	70	180207	BRACKET, TRIP
19	180578	AIR FILTER	71	180194	COVER, NOSE
20	180465	END CAP	72	180587	SHOULDER SCREW, M4.0X12MM
21	MSC4070-16	SCREW, SHCS, M4X0.70X16	73**	ISWIVEL-14M	INDUSTRIAL SWIVEL PLUG 1/4" MPT
22	180475	PIN, SPRING, M3X20 MM	74	180577	MUFFLER
23	174345	PIN, SPRING, M3X28	** NOT INCLUDED IN SX1838-E (EURO VERSION)		
24	184518	BUTTON, TRIGGER LOCK			
25	184513	ASSEMBLY, TRIGGER			
26	180504	WASHER, FLAT, D4X8X1			
27	184508	BUSHING, TRIGGER			
28	MHE4070-100	ELASTIC STOP NUT, M4			
29	181914	BRACKET, MAGAZINE			
30	180515	ASSEMBLY, BELT HOOK (for SX1838)			
	182272	ASSEMBLY, BELT HOOK, EU (for SX1838-E)			
31	180528	SPRING, LATCH			
32	180192	MAGAZINE, FIXED, MACHINING			
34	107583	PIN, SPRING M3 x 18MM			
35	174307	SCREW, SFHCS, M4X0.7X14			
36	MPG030012	PIN, SPRING, M3 X 12MM			
37	184506	BUTTON, MODE SWITCH			
38	180476	SPRING, TRIGGER			
39	TVA15	ASSEMBLY, TRIGGER VALVE			
40	182234	PU-RING			
41	180208	PLATE, DRIVER			
42**	181919	LABEL, WARNING			
43	180481	SPRING, MODE SWITCH			
44	184519	PIN, TRIGGER LOCK			
45	MRG002514	O-RING, .098 x .055			
46	184507	PIN, MODE SWITCH			
47	180530	GUIDE, LOWER CONTACT ARM			
48	180484	SCREW, SET, M3X8 MM			
49	180514	GUIDE, UPPER TRIP			
50	180513	SPRING, CONTACT ARM			
51	180510	ASSEMBLY, UPPER CONTACT ARM			
52	180509	ADJUSTING KNOB			
53	180318	ASSEMBLY, TRIP			